

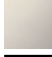





20 700 360



- 135mm projection
- fixed spout
- circular, air-enriched flow
- height of mixer 72 mm
- height up to aerator 40 mm
- hole diameter valve 32 mm
- hole diameter spout 35 mm
- without rosette
- 2x 1/2" x 1/2" high pressure hose
- max. flow 7 l/min
- lead-free
- This product can help a building meet the requirements of Green Building Rating Systems, e.g. LEED®, BREEAM®, DGNB

Only suitable for basins with an overflow.

|   |                               |               |
|---|-------------------------------|---------------|
|  | Brushed Platinum              | 20 700 360-06 |
|  | Chrome                        | 20 700 360-00 |
|  | Platinum                      | 20 700 360-08 |
|  | Durabress (23kt Gold)         | 20 700 360-09 |
|  | Brushed Durabress (23kt Gold) | 20 700 360-28 |
|  | Brushed Dark Platinum         | 20 700 360-99 |

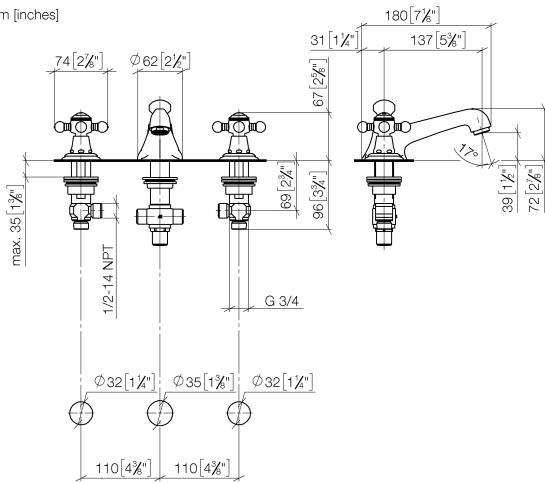
**Recommended miscellaneous**



**High pressure hoses -** 12 506 970 90  
 • 2x 3/8" x 1/2" x 500mm high pressure hose

20 700 360

mm [inches]



**Flow rate chart**



**Certificates**

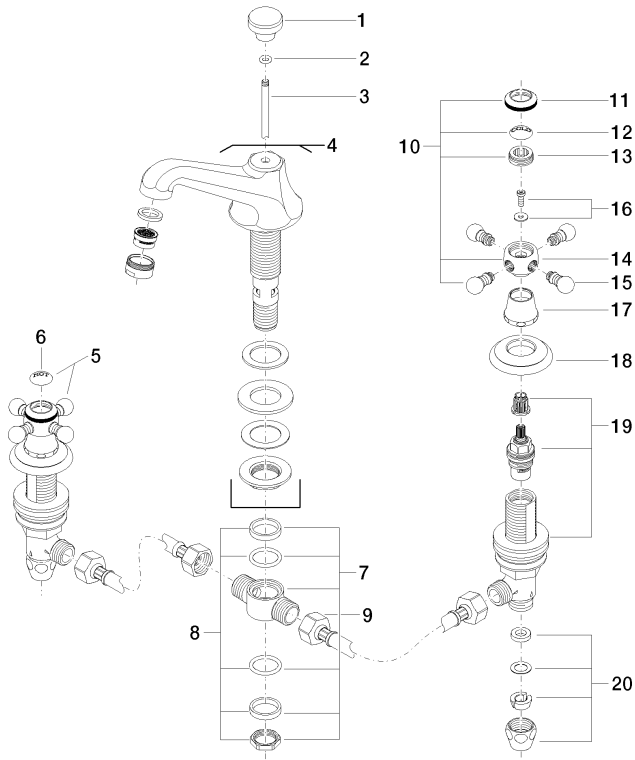
GDV\_0400288.

ETA\_17861.

WRAS\_1512009.

LGA\_8027.

20 700 360



21 — Ablaufgarnitur 04.11.01.001.00.FP